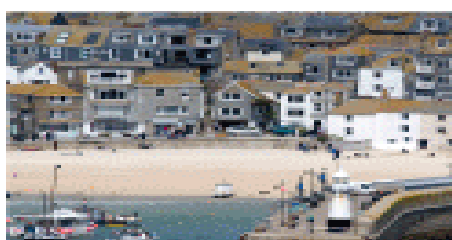


Neighbourhood Planning

Update • October 2018

Quick links

- [Current Consultations](#) • [Government Legislation](#)
- [Toolkit and guide notes](#) • [Other Information](#)
- [Town, Parish & City Council Online Mapping](#)



Welcome to the Neighbourhood Planning e-bulletin For October 2018

This month, there are a number of neighbourhood plans currently at examination, more Neighbourhood Planning Surgeries will be held in December and find out how the report published by the National Association of Local Councils on Neighbourhood Planning will affect your plan.

And finally, the draft Housing Supplementary Planning document is currently out to consultation. Information about how you can comment on the draft document is set out in the bulletin.

Neighbourhood Planning Team

Neighbourhood Planning Surgeries

You can book a slot for the next round of Neighbourhood Planning Surgeries being organised in September. This will provide Neighbourhood Planning Steering Groups with an opportunity to speak to Neighbourhood Planning and Planning Policy officers about any queries and be provided with some guidance on the development of their Plan. Each steering group can book a 45 minute slot which will need to be booked in advance.

If you are interested in attending one of the surgeries please e-mail the Neighbourhood Planning Team neighbourhoodplanning@cornwall.gov.uk stating which location you would wish to attend and whether you would prefer to attend a morning or afternoon.

The next round of Surgeries will be held on the following dates between 9am – 4pm:

- Camborne – Tuesday 4th December
- St Austell – Thursday 6th December
- Bodmin – Friday 7th December
- Truro – Monday 10th December
- Liskeard – Tuesday 11th December
- Penzance – Friday 14th December

Neighbourhood Planning in Cornwall

127

Town and Parish Councils submitted Designation Applications

114

Designated Areas

This includes 5 cluster Neighbourhood Plans where two or more parishes are working together.

37

Pre-Submission Consultations held

St Eval, Quethiock, Roseland Peninsula, St Ives, St Cleer, Bude-Stratton, St Minver Parishes, Rame Peninsula, Roche, Mevagissey, Gwinear-Gwithian, Feock, Withiel, North Hill, South Hill, St Erth, Liskeard, Falmouth, Lanlivery, Lanreath, St Mewan, Crantock, Hayle, Landrake and St Erney, Newquay, Lanner, Wadebridge with Egloshayle and St Breock, Illogan, Lostwithiel, Luxulyan, Polperro and Lansallos, St Agnes, Landulph, St Stephens by Launceston, Gwennap, Crowan, Chacewater

Designations:

From the 1st October 2016, local authorities no longer need to publish designation applications and consult people who live, work or carry out business in the area as long as the application is in conformity with the parish boundary as set out in the Neighbourhood Planning Regulations 2012/16 5A (3).

Cornwall Council will continue to consult statutory organisations when designation applications are submitted. A report will be collated providing initial information and guidance from these organisations to support town or parish councils during the early stages of developing their Neighbourhood Plan.

St Dennis Parish Council have designated their Neighbourhood area.

Strategic Environmental Assessment Screening (SEA):

[Saltash NDP](#) is currently being screened for SEA.

Pre-Submission Consultation:

[St Erme Parish NDP](#) consultation will run from 15th October until 25th November.

[Chacewater NDP](#) consultation will run until 27th October.

Plan Proposal Statutory Consultation:

29

Plan Proposals Submitted

St Eval, Quethiock, Roseland Peninsula, St Ives, Truro and Kenwyn, St Minver Parishes, Bude-Stratton, Roche, Rame Peninsula, Gwinear-Gwithian, North Hill, South Hill, Lanreath, Feock, Mevagissey, St Erth, Withiel, Liskeard, St Mewan, Crantock, Hayle, Lanlivery, Landrake with St Erney, Newquay, Lanner, Polperro and Lansallos, Illogan, Lostwithiel, St Agnes

23

Examinations held

St Eval, Quethiock, Roseland Peninsula, St Ives, Truro and Kenwyn, St Minver Parishes, Roche, Bude-Stratton, Rame Peninsula, Gwinear – Gwithian, North Hill, Lanreath, South Hill, Feock, Withiel, St Mewan, Mevagissey, Crantock, Hayle, St Erth, Liskeard, Landrake with St Erney, Lanlivery

20

Referendums held

St Eval, Quethiock, Roseland Peninsula, St Ives, Truro & Kenwyn, Bude – Stratton, Rame Peninsula, St Minver Parishes, Roche, Gwinear-Gwithian, North Hill, South Hill, Lanreath, Feock,

[St Agnes Parish NDP](#) consultation runs from 24th September until 5th November.

Examination:

[Lostwithiel NDP](#) is currently at examination. The independent Examiner is Andrew Ashcroft

[Newquay NDP](#) is currently at examination. The independent Examiner is Deborah McCann.

[Lanlivery NDP](#) examination has now been completed.

[Illogan](#), [Lanner](#) and [Polperro and Lansallos NDP's](#) are currently at examination. The independent Examiner is Barbara Maksymiw.

Referendum:

[Liskeard NDP](#) is going to referendum on 25th October.

[Landrake with St Erney NDP](#) is going to referendum on 8th November 2018.

Made Neighbourhood Plans:

No further neighbourhood plans have been made.

Withiel, St Mewan, Crantock, Hayle, St Erth, Mevagissey

20 Made Plans

St Eval, Quethiock, Roseland Peninsula, St Ives, Truro and Kenwyn, Bude – Stratton, Rame Peninsula, Roche, St Minver Parishes, Gwinear-Gwithian, North Hill, South Hill, Lanreath, Feock, Withiel, St Mewan, Crantock, Hayle, St Erth, Mevagissey

Contact us

For more information or if you would like to contact us please email the [Neighbourhood Planning Team](#).

[Neighbourhood Planning Toolkit links](#)

[Neighbourhood Planning in Cornwall](#)

[Neighbourhood Development Plan Proposals](#)

[Neighbourhood Planning Examinations and Referendum](#)

[Neighbourhood Planning Guide Notes and Templates](#)

Toolkit and Guidance Notes

We have a number of new [guidance notes](#) available on the toolkit including:

- [Wildlife, trees and woodland](#)
- [Sustainability Check \(Report Template and Guidance\)](#)
- [Design](#)
- [Flooding and Drainage](#)
- [Equalities Impact Assessment \(EQIA\)](#)
- [Principal Residence Policies](#)
- [Updated NDP Template](#)

Government Legislation

There is currently no government legislation updates

Other Information

National Association of Local Councils Report

The National Association of Local Councils (NALC) has recently commissioned and published a [report](#) on Neighbourhood Planning. The report assesses the significance of neighbourhood planning and its contribution to the national planning policy.

We have produced a short [article](#) which looks at how the findings of the report relate to neighbourhood planning in Cornwall. The NALC report identifies a number of barriers to neighbourhood planning including the five year land supply, planning appeals and local planning policy that we address in the article.

Useful web links

- [My Community](#)
- [Neighbourhood Planning Bill](#)
- [Cornwall Local Plan](#)
- [Neighbourhood Planning Roadmap Guide](#)
- [Neighbourhood Planning Regulations](#)
- [National Planning Policy Framework](#)
- [Upfront bulletin](#)
- [Cornwall Community Network Areas](#)
- [Neighbourhood Planning Support](#)

Draft Housing Supplementary Planning Document (SPD) Consultation

Residents have been urged to have their say on how affordable new homes should be built in Cornwall. The draft Supplementary Planning Document is out for consultation until 5pm on 30 November. Once finalised, it will provide guidance for developers, landowners and the general public on how affordable homes need to be built as part of any new property development. Last year, of the 3,400 properties built in Cornwall, more than 900 were affordable homes, the majority of which were made available for people to rent.

Cornwall Council cabinet portfolio holder for planning Bob Egerton said: "With high house prices and lower than average wages, there are plenty of people living in Cornwall who need help finding a home. This is why Cornwall Council is working hard to provide more affordable homes for local people.

"This Supplementary Planning Document will help us achieve this by ensuring that developers, landowners and individuals proposing to build in Cornwall are clear they must be building the right homes in the right places for the right people."

The Supplementary Planning Document will also give guidance to those proposing to self-build and to those building specialist housing for the elderly and disabled. For example, there is guidance for developers building self-contained homes with design features and support services available to help more elderly residents live independently.

You will find more information about the consultation on the [Council's website](#). Hard copies of the draft document are available to view in Libraries and Information Service offices across Cornwall or through the online planning portal on the Council website www.cornwall.gov.uk/planning using the planning application number PA18/00003/SPD.

Some of the information on this bulletin is taken from the Locality website.