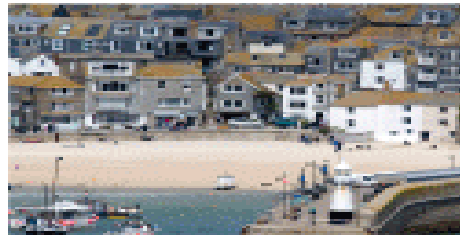
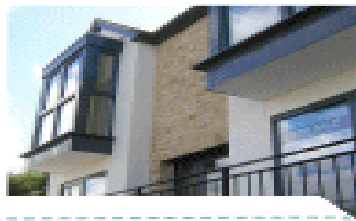


# Neighbourhood Planning

**Update • November 2018**

## Quick links

- [Current Consultations](#) • [Government Legislation](#)
- [Toolkit and guide notes](#) • [Other Information](#)
- [Town, Parish & City Council Online Mapping](#)



## Welcome to the Neighbourhood Planning e-bulletin for November 2018

It's your last chance to sign up to our quarterly NDP surgeries which will be held in December. This gives Steering Groups the opportunity to speak to Planning Policy Officers and ask any questions. Further information can be seen below.

Neighbourhood Planning Team

[www.cornwall.gov.uk](http://www.cornwall.gov.uk)

## Neighbourhood Planning Surgeries December 2018

You can book a slot for the next round of Neighbourhood Planning Surgeries being organised in December. This will provide Neighbourhood Planning Steering Groups with an opportunity to speak to Neighbourhood Planning and Planning Policy officers about any queries and be provided with some guidance on the development of their Plan. Each steering group can book a 45 minute slot which will need to be booked in advance. If you are interested in attending one of the surgeries please e-mail the Neighbourhood Planning Team

[neighbourhoodplanning@cornwall.gov.uk](mailto:neighbourhoodplanning@cornwall.gov.uk) stating which location you would wish to attend and whether you would prefer to attend a morning or afternoon.

The next round of Surgeries will be held on the following dates between 9am – 4pm:

- Camborne – Tuesday 4<sup>th</sup> December
- St Austell – Thursday 6<sup>th</sup> December
- Bodmin – Friday 7<sup>th</sup> December
- Truro – Monday 10<sup>th</sup> December
- Liskeard – Tuesday 11<sup>th</sup> December
- Penzance – Friday 14<sup>th</sup> December

## Neighbourhood Planning in Cornwall

**127**

### Town and Parish Councils submitted Designation Applications

**114**

### Designated Areas

This includes 5 cluster Neighbourhood Plans where two or more parishes are working together.

**38**

### Pre-Submission Consultations held

St Eval, Quethiock, Roseland Peninsula, St Ives, St Cleer, Bude-Stratton, St Minver Parishes, Rame Peninsula, Roche, Mevagissey, Gwinear-Gwithian, Feock, Withiel, North Hill, South Hill, St Erth, Liskeard, Falmouth, Lanlivery, Lanreath, St Mewan, Crantock, Hayle, Landrake and St Erney, Newquay, Lanner, Wadebridge with Egloshayle and St Breock, Illogan, Lostwithiel, Luxulyan, Polperro and Lansallos, St Agnes, Landulph, St Stephens by Launceston, Gwennap, Crowan, Chacewater, St Erme

## Designations:

From the 1<sup>st</sup> October 2016, local authorities no longer need to publish designation applications and consult people who live, work or carry out business in the area as long as the application is in conformity with the parish boundary as set out in the Neighbourhood Planning Regulations 2012/16 5A (3).

Cornwall Council will continue to consult statutory organisations when designation applications are submitted. A report will be collated providing initial information and guidance from these organisations to support town or parish councils during the early stages of developing their Neighbourhood Plan.

Cornwall Council has approved a designation request from:

There are no new designations this month.

### 31

#### Plan Proposals Submitted

St Eval, Quethiock, Roseland Peninsula, St Ives, Truro and Kenwyn, St Minver Parishes, Bude-Stratton, Roche, Rame Peninsula, Gwinear-Gwithian, North Hill, South Hill, Lanreath, Feock, Mevagissey, St Erth, Withiel, Liskeard, St Mewan, Crantock, Hayle, Lanlivery, Landrake with St Erney, Newquay, Lanner, Polperro and Lansallos, Illogan, Lostwithiel, St Agnes, Chacewater, Luxulyan

### 24

#### Examinations held

St Eval, Quethiock, Roseland Peninsula, St Ives, Truro and Kenwyn, St Minver Parishes, Roche, Bude-Stratton, Rame Peninsula, Gwinear – Gwithian, North Hill, Lanreath, South Hill, Feock, Withiel, St Mewan, Mevagissey, Crantock, Hayle, St Erth, Liskeard, Landrake with St Erney, Lanlivery, Polperro and Lansallos

### 22

#### Referendums held

St Eval, Quethiock, Roseland Peninsula, St Ives, Truro & Kenwyn, Bude – Stratton, Rame Peninsula, St Minver Parishes, Roche, Gwinear-Gwithian, North Hill, South Hill, Lanreath, Feock, Withiel, St Mewan, Crantock, Hayle, St Erth, Mevagissey, Liskeard, Landrake with St Erney

## Strategic Environmental Assessment Screening (SEA):

[Saltash NDP](#) is currently being screened for SEA.

[Calstock NDP](#) is currently being screened for SEA.

[St Endellion NDP](#) is currently being screened for SEA.

## Pre-Submission Consultation:

There are no plans currently at pre-submission consultation.

## Plan Proposals Statutory Consultation:

[Chacewater](#) and [Luxulyan](#) have both formally submitted their plans. They are currently going through their legal compliance checks.

## Examination:

[Lostwithiel](#) NDP is currently at examination. The independent Examiner is Andrew Ashcroft.

[Newquay](#) and [St Agnes](#) NDPs are currently at examination. The independent Examiner is Deborah McCann.

[Illogan](#) and [Lanner](#) NDPs are currently at examination. The independent Examiner is Barbara Maksymiw.

## Referendum:

[Landrake with St Erney](#) NDP was successful at referendum on 8 November 2018.

[Lanlivery](#), and [Polperro and Lansallos](#) NDPs are both going to referendum on 24 January 2019.

## Made Neighbourhood Plans:

[Liskeard NDP](#) was formally made on 27 November 2018.

## 21

### Made Plans

St Eval, Quethiock, Roseland Peninsula, St Ives, Truro and Kenwyn, Bude – Stratton, Rame Peninsula, Roche, St Minver Parishes, Gwinear-Gwithian, North Hill, South Hill, Lanreath, Feock, Withiel, St Mewan, Crantock, Hayle, St Erth, Mevagissey, Liskeard

## Contact us

For more information or if you would like to contact us please email the [Neighbourhood Planning Team](#).

## Neighbourhood Planning Toolkit links

- [Neighbourhood Planning in Cornwall](#)
- [Neighbourhood Planning news and events](#)
  - [Neighbourhood Area Designation](#)
- [Neighbourhood Development Plan Proposals](#)
- [Neighbourhood Planning Examinations and Referendums](#)
- [Neighbourhood Planning Guide Notes and Templates](#)

## Toolkit and Guidance Notes

We have a number of new [guidance notes](#) available on the toolkit including:

- [Wildlife, trees and woodland](#)
- [Sustainability Check \(Report Template and Guidance\)](#)
- [Design](#)
- [Flooding and Drainage](#)
- [Equalities Impact Assessment \(EQIA\)](#)
- [Principal Residence Policies](#)
- [Funding and Support](#)
- [Updated NDP Template](#)

## Government Legislation

There is currently no government legislation updates

## Other Information

## Useful web links

- [My Community](#)
- [Neighbourhood Planning Bill](#)
- [Cornwall Local Plan](#)
- [Neighbourhood Planning Roadmap Guide](#)
- [Neighbourhood Planning Regulations](#)
- [National Planning Policy Framework](#)
- [Upfront bulletin](#)
- [Cornwall Community Network Areas](#)